

DC-62

Drag Chain Conveyor

The Model DC-62 is a two strand drag chain conveyor designed to handle pallets.

- 11 Widths
- Modular Assembly
- Adjustable DCS and DCDS-Type Floor Supports Available

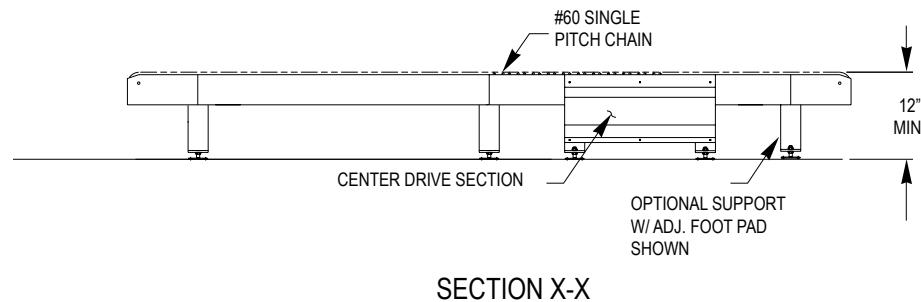
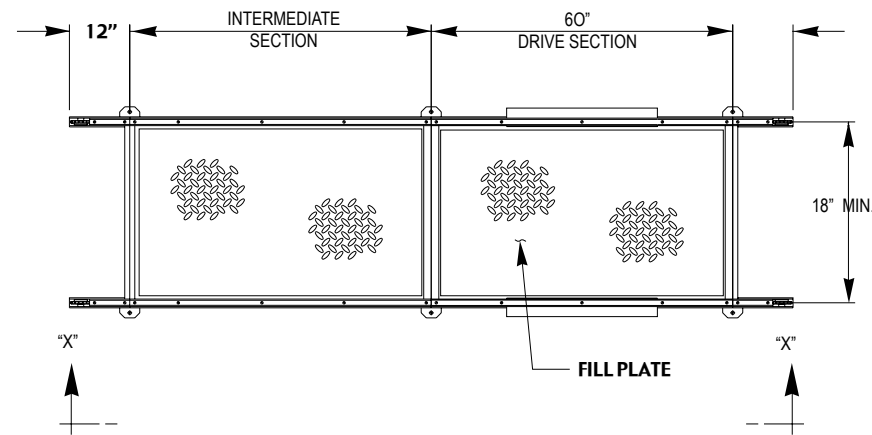


HOW IT WORKS

The conveyor is made up of drive, intermediate and tail sections on which two strands of #60 single-pitch chain travel. Each strand is a continuous loop and driven by a common drive shaft.

| SIZE TO ORDER | FRAME WIDTH | 19 7/8" | 22 7/8" | 25 7/8" | 28 7/8" | 31 7/8" | 34 7/8" | 37 7/8" | 40 7/8" | 43 7/8" | 46 7/8" | 49 7/8" |
|--------------------|----------------|---------|---------|---------|---------|---------|---------|---------|---------|---------|---------|---------|
| OVERALL LENGTH "A" | STRAND CENTERS | 18" | 21" | 24" | 27" | 30" | 33" | 36" | 39" | 42" | 45" | 48" |
| 7' | | 433 | 450 | 466 | 483 | 499 | 517 | 534 | 551 | 567 | 581 | 600 |
| Per Foot Weight | | 37 | 39 | 41 | 43 | 45 | 47 | 49 | 51 | 53 | 55 | 57 |

All weights in catalog are conveyor weights only. Accessories, crating, etc., are not included.



STANDARD SPECIFICATIONS

CHAIN – #60 single pitch conveyor chain (straight sidebar).

CHAIN GUIDE – UHMW polyethylene.

FRAME – 6 in. x 7 ga. powder painted formed steel angle with 1 1/2 in. x 3/16 wall, chain support tube. 4 ga. formed coupling channels located at infeed and discharge ends of each module.

MOTOR – 1 1/2 HP – 208/230/460/575V – 3 PH. 60 HZ. gearmotor, located underneath in 5 ft. long module.

DRIVE SPROCKETS – Hardened #60 with 1 3/8 in. dia. steel shaft.

BEARINGS – Sealed, pre-lubricated, self aligning, ball bearings on drive.

CONVEYING SPEED – 35 FPM.

CAPACITY – 6000 lbs. maximum at 35 FPM (1 1/2 HP maximum). NOT TO EXCEED CAPACITY IN CHART.

FLOOR SUPPORTS – Now supplied as optional equipment.

NOTE: Product footprint may affect drive capacity.

| LOAD CAPACITY CHART (Live)* @ 35 FPM | | |
|--------------------------------------|-------------------|------------|
| HP | TOTAL LOAD (Lbs.) | |
| | UP TO 50' | UP TO 102' |
| 1 1/2 | 6000 | 6000 |

MAXIMUM UNIT LOAD – 6000 lbs.



OPTIONAL EQUIPMENT

FLOOR SUPPORTS – DCS and DCDS Type floor supports are available with a wide range of adjustment. Specify top of chain elevation. One support required at every bed joint and ends of conveyor. Holes in feet for lagging to floor.

MOTORS – 1 1/2 HP maximum.

CLOSED TAIL – Overall length will be affected.

CONVEYING SPEED – Speeds other than 35 FPM will require gear box change (contact factory).

