

DC-82

Drag Chain Conveyor

The Model DC-82 is a two strand drag chain conveyor designed to handle pallets.

- 10 Widths
- Modular Assembly
- Adjustable DCS and DCDS-Type Floor Supports Available

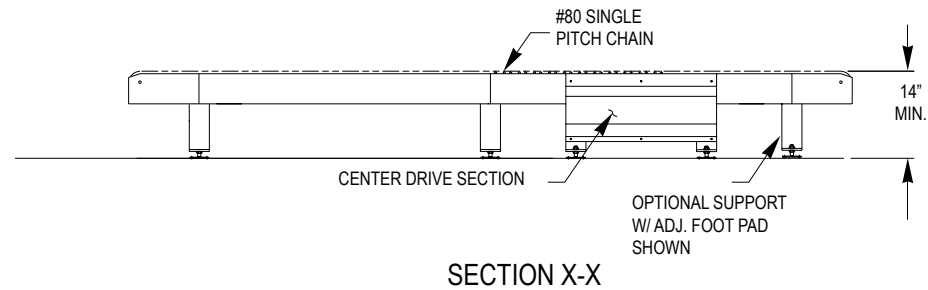
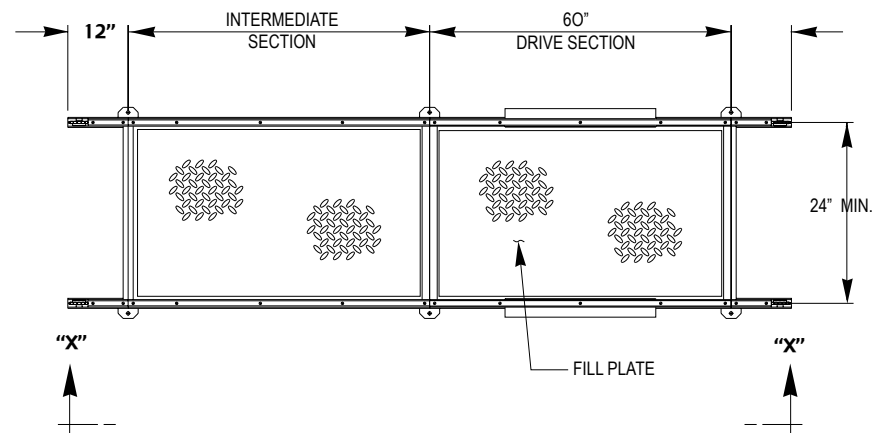


HOW IT WORKS

The conveyor is made up of drive, intermediate and tail sections on which two strands of #80 single-pitch chain travel. Each strand is a continuous loop and driven by a common drive shaft.

SIZE TO ORDER	FRAME WIDTH	26 1/2"	29 1/2"	32 1/2"	35 1/2"	38 1/2"	41 1/2"	44 1/2"	47 1/2"	50 1/2"	53 1/2"
OVERALL LENGTH "A"	STRAND CENTERS	24"	27"	30"	33"	36"	39"	42"	45"	48"	51"
7' Per Foot Weight		583	604	625	646	667	688	709	730	751	772
		52	55	58	61	64	67	70	73	76	79

All weights in catalog are conveyor weights only. Accessories, crating, etc., are not included.



STANDARD SPECIFICATIONS

CHAIN – #80 single pitch conveyor chain (straight sidebar).

CHAIN GUIDE – UHMW polyethylene.

FRAME – 6 in. x 4 ga. powder painted formed steel angle with 2 in. x 1/4 in. thick wall, chain support tube. 4 ga. formed coupling channels located at infeed and discharge ends of each module.

MOTOR – 2 HP – 208/230/460/575V – 3 PH. 60 HZ. gearmotor, located underneath in 5 ft. long module.

DRIVE SPROCKETS – Hardened #80 with 1 1/2 in. dia. steel shaft.

BEARINGS – Sealed, pre-lubricated, self aligning, ball bearings on drive.

CONVEYING SPEED – 30 FPM.

CAPACITY – 5800 lbs. maximum at 30 FPM (2 HP maximum). NOT TO EXCEED CAPACITY IN CHART.

FLOOR SUPPORTS – Now supplied as optional equipment.

NOTE: Product footprint may affect drive capacity.

LOAD CAPACITY CHART (Live)* @ 30 FPM		
HP	TOTAL LOAD (Lbs.)	
	UP TO 50'	UP TO 102'
2	5800	5500

MAXIMUM UNIT LOAD – 4000 lbs.



OPTIONAL EQUIPMENT

FLOOR SUPPORTS – DCS and DCDS Type floor supports are available with a wide range of adjustment. Specify top of chain elevation. One support required at every bed joint and ends of conveyor. Holes in feet for lagging to floor.

MOTORS – 3 HP maximum.

CLOSED TAIL – Overall length will be affected.

CONVEYING SPEED – Speeds other than 30 FPM will require gear box change (contact factory).