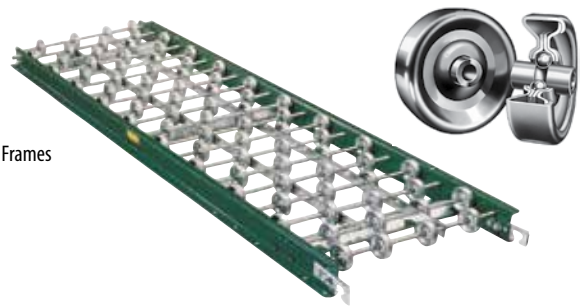


# WHEEL

## Gravity Skatewheel Conveyor

Gravity Skatewheel conveyor is ideally used to convey lightweight packages or when operation requires lightweight sections. Useful in setting up temporary conveyor lines in warehousing activities, shipping departments, assembly areas, etc.

- 4 Widths
- Powder Painted Steel or Aluminum Frames
- Axles on 3 in. or 4 in. Centers



STEEL FRAMES

3" AXLE CENTERS							
12" Overall Width				15" Overall Width			
Model No.	WPF	Wgts. (Lbs.)		Model No.	WPF	Wgts. (Lbs.)	
		5'	10'			5'	10'
3SW-12-16	16	43	80	3SW-15-16	16	48	87
3SW-12-12	12	38	72	3SW-15-12	12	43	78
3SW-12-10	10	37	68	3SW-15-10	10	40	73
18" Overall Width				24" Overall Width			
Model No.	WPF	Wgts. (Lbs.)		Model No.	WPF	Wgts. (Lbs.)	
		5'	10'			5'	10'
3SW-18-20	20	54	98	3SW-24-28	28	65	118
3SW-18-18	18	49	92	3SW-24-24	24	62	112
3SW-18-16	16	46	87	3SW-24-20	20	57	103

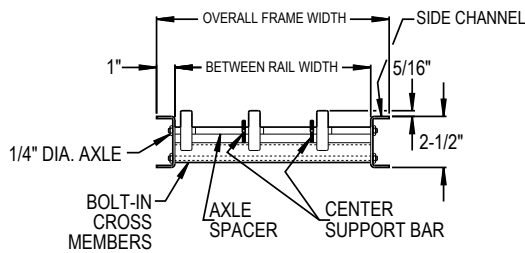
ALUMINUM FRAMES

All weights in catalog are conveyor weights only. Accessories, crating, etc., are not included.

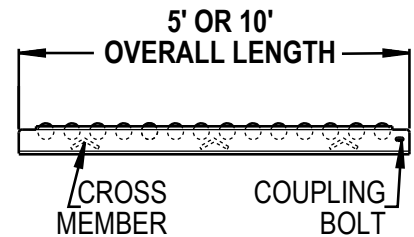
All weights in catalog are conveyor weights only. Accessories, crating, etc., are not included.

3" AXLE CENTERS							
12" Overall Width				15" Overall Width			
Model No.	WPF	Wgts. (Lbs.)		Model No.	WPF	Wgts. (Lbs.)	
		5'	10'			5'	10'
3AW-12-16	16	23	43	3AW-15-16	16	26	41
3AW-12-12	12	21	39	3AW-15-12	12	23	42
3AW-12-10	10	20	36	3AW-15-10	10	22	39
18" Overall Width				24" Overall Width			
Model No.	WPF	Wgts. (Lbs.)		Model No.	WPF	Wgts. (Lbs.)	
		5'	10'			5'	10'
3AW-18-20	20	28	52	3AW-24-28	28	34	63
3AW-18-18	18	27	49	3AW-24-24	24	32	59
3AW-18-16	16	25	46	3AW-24-20	20	30	55

All weights in catalog are conveyor weights only. Accessories, crating, etc., are not included.



LOAD CAPACITY CHART				
Frame Material	Support Centers	Frame Capacity (Lbs.)	Wheel Capacity (Lbs.)	
		Maximum Distributed Live Load Per Foot	Maximum Load Per Wheel	
Steel	5'	250	65	
	10'	31		
Aluminum	5'	83	45	
	10'	10		



## • STANDARD SPECIFICATIONS

**WIDTH**—12 in., 15 in., 18 in., and 24 in. overall.

**FRAME**—2 1/2 in. deep x 1 in. flange x 12 ga. powder painted formed steel or 3/8 in. heat-treated aluminum channel with bolt-in cross members.

**COUPLINGS**—Butt Couplings on both ends

**LENGTHS**—5 ft. & 10 ft. straight sections.

**WHEELS**—1 15/16 in. O.D. ball bearings run in hardened raceway with life-time lubrication. Corrosion resistant aluminum or zinc-coated steel.

**AXLES**—1/4 in. dia., threaded one end with locknut. Spaced on 3 in. or 4 in. centers, specify.

**CAPACITY**—See Load Capacity Chart this page.